

MANAGEMENT REPORT OF FUND PERFORMANCE  
**FIERA U.S. DIVIDEND CLASS**  
**(FORMERLY NATIXIS U.S. DIVIDEND PLUS CLASS)**

For the year ended December 31, 2019

*This annual management report of fund performance contains financial highlights, but does not contain either the interim financial report or annual financial statements of the investment fund. You can get a copy of the interim financial report or annual financial statements at your request, and at no cost, by calling us toll free at 1-866-378-7119, by writing to us at Fiera Investments LP (the "Manager"), 145 King Street West, Suite 1500, Toronto, ON., M5H 1J8, or by visiting our website at fierainvestments.com or SEDAR at www.sedar.com. Securityholders may also contact us using one of these methods to request a copy of the Fund's proxy voting policies and procedures, proxy voting disclosure record, or quarterly portfolio disclosure.*

#### **A NOTE ON FORWARD-LOOKING STATEMENTS**

*This report may contain forward-looking statements about the Fund, including its strategy, expected performance and conditions. Forward-looking statements are statements that are predictive in nature, that depend upon or refer to future events or conditions, or that include words such as "expects", "anticipates", "plans", "believes", "estimates" or negative versions thereof and similar expressions. In addition, any statement that may be concerning future performance, strategies or prospects, and possible future Fund action, is also a forward-looking statement. Forward-looking statements are based on current expectations and projections about future events and are inherently subject to, among other things, risks, uncertainties and assumptions about the Fund and economic factors.*

*Forward-looking statements are not guarantees of future performance, and actual events and results could differ materially from those expressed or implied in any forward-looking statements made by the Fund. Any number of important factors could contribute to these digressions, including, but not limited to, general economic, political and market factors, interest and foreign exchange rates, capital markets, business competition, technological changes, changes in government regulations, unexpected judicial or regulatory proceedings and catastrophic events.*

*We stress that the above-mentioned list is not exhaustive. We encourage you to consider these and other factors carefully before making any investment decisions and we urge you to avoid placing undue reliance on forward-looking statements. Further, you should be aware of the fact that the Fund has no specific intention of updating any forward-looking statements whether as a result of new information, future events or otherwise.*

## **Management Discussion of Fund Performance**

### **Investment Objective and Strategies**

The investment objective of the Fiera U.S. Dividend Class (the "Fund" or the "Tax Class Fund") is to provide a combination of current cash flow and long-term capital growth primarily through investment in a diversified portfolio of dividend paying U.S. equity securities.

Fiera Capital Corporation ("Fiera Capital") was appointed as the subadvisor of the Fund on October 18, 2019. The investment strategies were also changed on that date in order to reflect Fiera Capital's investment style and to provide Fiera Capital more flexibility in achieving the Fund's investment objectives, which remain unchanged.

The Sub-Advisor seeks to employ a systematic investment approach that exploits the persistent valuation anomaly in developed equity markets where companies that are less sensitive to broad market indexes (low systematic risk) tend to outperform on a risk adjusted basis compared to companies that are highly sensitive to broad market indexes (high systematic risk). The Sub-Advisor will seek to invest the Fund's assets in such a way as to have the Fund diversified across high conviction stocks and will focus on identifying and investing in companies that exhibit a combination of low systematic risk and superior dividend payout. The Sub-Advisor will seek to emphasize investment in low systematic risk companies, characterized by a combination of lower volatility and lower correlation to broad U.S. market indices.

### **Risk**

The risk rating of this Fund was changed from 'medium' to 'low to medium' in June 2019. The risks of the Fund remain as discussed in the Fund's most recent simplified prospectus or any amendments and fund facts.

### **Results of Operations**

The Fund's net asset value (excludes inter-fund debt and rounded to the nearest thousand) increased during the year from \$91,468,000 to \$104,519,000. This increase was a result of a combination of net sales and positive return on investments.

The Series A of the Return of Capital class of the Fund returned 12.9% compared to a 25.2% return on its benchmark, S&P 500 Index (the "Benchmark"), from which fees and expenses are not deducted. See the section titled "Past Performance" for a detailed summary of the performance of the Fund.

### **Market impacts on Fund performance**

The Fund underperformed in the first half of 2019, primarily due to unfavorable stock selection in the Health Care, Consumer Discretionary, and Industrials sectors. The portfolio's relatively low allocation to the underperforming Health Care sector and overweighting of the cyclically sensitive Information Technology and Industrials sectors had a favorable impact upon relative performance against the benchmark.

U.S. equity markets advanced steadily throughout the first quarter of 2019, rebounding dramatically from the large sell-off in the fourth quarter. The "risk on" rally was led by Mid-Cap stocks in the cyclical and growth sectors like Technology and Industrials. The equity market rally carried into the second quarter and steadily advanced throughout April before selling off in May on concerns of slowing economic growth and the escalation of trade tensions.

However, stocks rallied on to historical high levels in June, due to the more dovish comments coming out of the Fed and on optimism that constructive trade talks with China could be resumed. The year began with a U.S. federal government shutdown that provided a backdrop of uncertainty. While these shutdowns in the past have had little long-term economic effect, the length and severity of this one left some pondering a multi-quarter distortion on GDP and private sector spending. Nevertheless, first quarter GDP report growth registered a surprisingly strong 3.1%, reflecting solid growth as consumer sentiment remained elevated, supported by a healthy employment environment. The American labor market at sub-4% unemployment appears to be at or near full employment, with signs that wage growth may finally be perking up.

Also helping sentiment was the anticipation of a trade deal with China. A more benign trade environment is seen to be a boon to a number of industries, notably in the tech and industrial sectors.

MANAGEMENT REPORT OF FUND PERFORMANCE  
**FIERA U.S. DIVIDEND CLASS**  
**(FORMERLY NATIXIS U.S. DIVIDEND PLUS CLASS)**

For the year ended December 31, 2019

#### **Change of Sub-Advisor**

The Fund's sub-advisor changed to Fiera Capital Corporation on October 18, 2019. The new sub-advisor immediately began implementing the new investment philosophy. Concurrent with this change, the fund is changing its benchmark index from the Russell 1000 Value Index to the S&P 500.

The S&P 500 Index gained 9.1% during the last-quarter of 2019. In December, the United States and the Republic of China finally agreed on the terms of the phase one deal that reduces some U.S. tariffs on Chinese goods in exchange for Chinese purchases of American farm, energy and manufactured goods and better protection for U.S. intellectual property. The day after Christmas, the three major U.S. indices hit record highs on raised hopes that a trade deal was in line to be signed in January. "The deal is done, it's just being translated now", President Trump said, to traders' delight.

After the Fed took some additional insurance in October by lowering its lending rate to a target range of 1.50% to 1.75%, it indicated that it would pause rate cuts for the foreseeable future. Since then, Fed officials have publicly characterized the U.S. economy as strong, led by solid consumer spending but threatened by exogenous factors such as global weakness, the U.S.-China tariff war and uncertainties associated with Brexit.

In the S&P 500, the Health Care and Information Technology sectors outperformed, gaining 14.4% whereas the Real Estate sector was the only detractor, losing 2.4%.

The USD/CAD exchange rate was volatile in Q4 2019 and analyzing the performance in USD helps better understand how the strategy navigated through the bull market we witnessed last quarter. Removing the impact of the currency movements is helpful in understanding how the Low Beta strategy responded to the bull market.

Some of our biggest contributors to performance came from Lilly Eli, Newmont Gold and Everest Group while major detractors were Ventas and Public Storage REIT.

Newmont Gold presents interesting Low beta asymmetric characteristics. In other words, Newmont Gold offers a compelling risk profile to its investors. Historically, the company has exhibited a strong ability to preserve capital in down-markets while participating in up-markets. The last quarter was a great example of the latter - Newmont Gold outperformed its sector benchmark greatly and the S&P 500 Total Return Index in CAD by 477 bps in the relevant time period. Its attractive risk characteristics combined to its high dividend payout rate partly justify our high level of conviction in this name.

The fund is underweight energy, health care, IT and telecoms while overweight utilities, real estate, staples and financials.

#### **Outlook**

Markets continued to set record highs time and again in 2019, something which defied most market expectations. Without being alarmist, the fact is that eventually the party will come to an end and it's critical that your portfolio be protected when it does.

We will continue to diligently apply our investment philosophy, which consists of investing in a well-diversified portfolio of Low Beta names, as we are confident that our strategy of protecting our clients' portfolios against large market drawdowns is a winning one in the long-term. Favoring sustainable dividend-paying companies is instrumental to building long-term wealth.

The sub-advisor is continuously monitoring the Fund's portfolio due to the increased volatility in the equity and fixed income markets caused by macroeconomic uncertainties, ongoing global trade disputes, oil price wars and the economic impact caused by the COVID-19 virus. These could have an adverse impact on economic and market conditions and trigger a period of economic slowdown in Canada and internationally. However, the uncertainty around this precludes the sub-advisor from making predictions on the ultimate impact each one of these will have on the net assets and performance of the Fund. The sub-advisor seeks to mitigate or minimize any negative impact through active portfolio management and diversification.

#### **Change of Securities Offerings**

Effective June 5, 2018, the securities of Series HF, and Deferred Load and Low Load purchase options of the shares of Series A are no longer available for purchase.

Effective October 1, 2018, the securities of Series H are no longer available for purchase.

Investors may continue to own these securities, redeem their investment, or switch their investment to securities of the Fund or another Fiera Fund that is available for purchase and for which they qualify. Investors may also switch their Deferred Load and Low Load purchase option securities for other Deferred Load and Low Load purchase option securities, respectively.

#### **Distributions**

Effective June 4, 2018, the Return of Capital and Dividend classes of the Fund increased each of their distribution rates from \$0.90 to \$1.02, annually, paid monthly.

#### **Inter-Fund Debt**

Under the fund on fund investment structure, the Fund issues debt in the form of limited recourse notes to the Fiera U.S. Dividend Registered Fund (the "Registered Fund"). These limited recourse notes are redeemable on demand by the Registered Fund, and pay interest at a floating rate equal to prime plus 1%. During the year, the maximum and minimum inter-fund debt issued (rounded to the nearest thousand) was \$4,990,000 and \$4,297,000, respectively. At the end of the year, the debt represented 4.7% of the Fund's net asset value. This debt is intended to increase the tax efficiency of the Fund and is not used as financial leverage.

#### **Related Party Transactions**

The Manager provides investment management, distribution and administrative services to the Fund. These services are provided in the normal course of operations and are recorded at the amount of consideration agreed to by the Manager and the Fund. National Instrument 81-107 requires the Fund, to establish an independent review committee ("IRC") to whom the Fund must refer all conflict of interest matters for review or approval. NI 81-107 also imposes obligations upon the Manager to establish written policies and procedures for dealing with conflict of interest matters, maintain records in respect of these matters, and provide assistance to the IRC in carrying out its functions. . The Manager has retained Fiera Capital Corporation, a related party, as sub-advisor to the Fund.

**MANAGEMENT REPORT OF FUND PERFORMANCE**  
**FIERA U.S. DIVIDEND CLASS**  
**(FORMERLY NATIXIS U.S. DIVIDEND PLUS CLASS)**

For the year ended December 31, 2019

**Management Fees**

In consideration for the investment advisory services provided, the Manager receives a monthly management fee based on the daily average net assets of each series of the Fund, other than Series I. From its management fees, the Manager pays the cost of portfolio manager compensation, and sales and trailing commissions to dealers who distribute securities of the Fund. In consideration for other administrative services provided, the Manager may also charge an administrative fee to the Funds.

From time to time, the Manager may reduce the effective management fee payable by some shareholders by reducing the management fee it charges to the Fund, directing the Fund to make management fee distributions to these shareholders, or by rebating these fees back to the Fund in amounts equal to the management fee reduction. Management fee distributions are automatically reinvested in additional shares of the Fund and are accounted for as distributions for financial statement purposes.

*Contingent Tax Management Fee*

Effective June 4, 2018, the Manager eliminated the annual contingent tax management fee associated with all series of securities of the Compound Growth class of each of the Tax Class Funds.

*Fund Operating Expenses*

Each Fund is responsible for the payment of all operating expenses including, but not limited to, taxes, accounting fees, legal fees, audit fees, trustee fees, IRC fees, custodial fees, administrative costs, investor servicing costs, broker commissions, interest and bank charges, and costs of reports and prospectuses. In consideration for other administrative services provided, the Manager may also charge an administrative fee to the Funds. The Manager allocates to the Fund certain overhead costs which are directly related to the operation of the Fund (excluding marketing and sales). Those overhead costs would include a portion of the Manager's IT computer software, systems and staff salaries, facilities, insurance (property and liability only), depreciation on fixed assets, data and telephone, printing, office and other general administrative costs.

Operating expenses are attributed to a Fund, or a Fund's series. Common operating expenses of the Funds may be allocated among each fund based on the average number of securityholders or the average daily net assets value of that fund, or other methods of allocation that the Manager deems appropriate, depending on the type of operating expenses being allocated.

*Expenses Absorbed*

The Manager may waive or absorb a portion of the management fees or operating expenses for certain funds. The decision to absorb these expenses is reviewed periodically and determined at the discretion of the Manager, without notice to shareholders.

The related party fees charged are as follows:

	December 31, 2019	December 31, 2018
Management fees	1,367,730	1,436,580
Inter-fund debt interest	233,306	249,496
Administrative services provided by the Manager	46,682	47,108
Fund expenses absorbed by the Manager	(114,612)	(97,668)

**Other Information**

**Change of control of the Manager**

On July 3, 2019 Fiera Capital Corporation acquired all of the outstanding common shares of Natixis Investment Managers Canada Corp., the parent of the Manager, thereby resulting in an indirect change of control of the Manager. Subsequent to the change of control, the following name changes were made:

Previous Name	New Name
Natixis Investment Managers Canada Corp.	Fiera Investments Corp.
Natixis Investment Managers Canada LP	Fiera Investments LP
Natixis Investment Managers Canada Capital Corporation Voting Trust	Fiera Investments Capital Corporation Voting Trust
Natixis Investment Managers Canada Capital Corporation	Fiera Investments Capital Corporation

On September 1, 2019, Fiera Investments Corp. was amalgamated with Fiera Capital Corporation.

**Management Fees and Class/Series Description**

The Fund offers these Tax Classes: Return of Capital; Dividend; Compound Growth; and a single non-publicly offered class of debt and equity called Inter-Fund. Each of these classes, excluding the Inter-Fund class, have three publicly offered series of shares: Series A, Series F, and Series I. The following securities are no longer available for purchase: Deferred Load and Low Load purchase options of Series A, Series H, Series HF, Series U, Regular Front End Load, Deferred Load, Low Load and all series of the Capital Gains class.

Management fees differ among the Fund's series of shares. The Fund pays the Manager an aggregate management fee. Management fees for Series I shares are negotiated and paid directly by the investor, not by the Fund. From its management fees, the Manager pays the costs of portfolio manager compensation, and sales and trailing commissions to dealers who distribute securities of the Fund.

Effective June 4, 2018, the annual contingent tax management fee was eliminated.

MANAGEMENT REPORT OF FUND PERFORMANCE  
**FIERA U.S. DIVIDEND CLASS**  
**(FORMERLY NATIXIS U.S. DIVIDEND PLUS CLASS)**

For the year ended December 31, 2019

Series	Management Fee (%)			As a Percentage of Management Fees	
	Return of Capital and Dividend	Compound Growth	Capital Gains	Dealer Compensation (%)	General Administration, Investment Advice and Profit (%)
Series A / Regular, Deferred and Low Load	2.00	2.00	2.00	44	56
Series F	0.85	0.95	1.00	0	100
Series H	1.75	1.75	1.75	57	43
Series HF	0.75	0.75	0.75	0	100
Series U	1.50	N/A	N/A	50	50

For Series I Shares, separate Series I fees are negotiated and paid by each Series I investor. The combined management, administrative and any service fees charged for Series I Shares will not exceed the management fee charged for Series F Shares.

### Summary of Investment Portfolio at December 31, 2019

The Summary of Investment Portfolio may change due to ongoing portfolio transactions of the Fund. You may obtain quarterly updates to the Fund's holdings free of charge by calling us toll free at 1-866-378-7119 or by writing us at Fiera Investments LP, 145 King Street West, Suite 1500, Toronto, ON, M5H 1J8 or by visiting our website at fierainvestments.com or SEDAR at www.sedar.com.

Top 25 Holdings	%*	Sector Allocation	%*
Eli Lilly & Co	3.9	Information Technology	16.7
Pinnacle West Capital	3.7	Financials	16.6
Campbell Soup Co	3.6	Consumer Staples	14.1
Starbucks Corp	3.6	Health Care	8.9
Everest Re Group Ltd	3.6	Utilities	8.7
Omnicom Group	3.6	Industrials	8.5
Healthpeak Properties Inc	3.5	Real Estate	8.4
Waste Management Inc	3.5	Consumer Discretionary	8.3
Paychex Inc	3.5	Telecommunication Services	5.7
Sabre Corp	3.5	Materials	3.1
Western Union Co	3.5	Others^	1.0
Hormel Foods Corp	3.5	Total	100.0
CME Group Inc	3.4		
Fidelity National Financial	3.3		
Newmont Goldcorp Corp	3.1		
Merck & Co. Inc.	2.9		
Sempra Energy	2.9		
Equifax Inc	2.8		
McCormick & Co Non Vtg Shrs	2.8		
Ventas Inc	2.8		
PulteGroup Inc	2.8		
Duke Energy Corp	2.2		
Interpublic Group of Companies Inc	2.2		
Medtronic PLC	2.1		
Republic Services Inc	2.1		

\* Based on Transactional NAV in which securities are prices at market closing prices on December 31, 2019.

^Including other working capital.

The Summary of Investment Portfolio may change due to ongoing portfolio transactions of the Fund. Updates are available quarterly.

### Past Performance

The past performance shows historical performance of each class and series of shares of the Fund. This information is provided to show the past performance only and does not necessarily indicate how the Fund will perform in the future. The past performance information assumes that all distributions were reinvested in additional shares of the same class and series of the Fund. The past performance information does not take into account sales, redemption, distribution or other optional charges that would have reduced returns or performance.

Effective June 4, 2018, the annual management fee of Series F of Return of Capital and Dividend classes was lowered by 15 basis points, and Series F of Compound Growth class was lowered by 5 basis points, respectively.

Effective June 4, 2018, the Manager eliminated the annual contingent tax management fee associated with all series of the Compound Growth class.

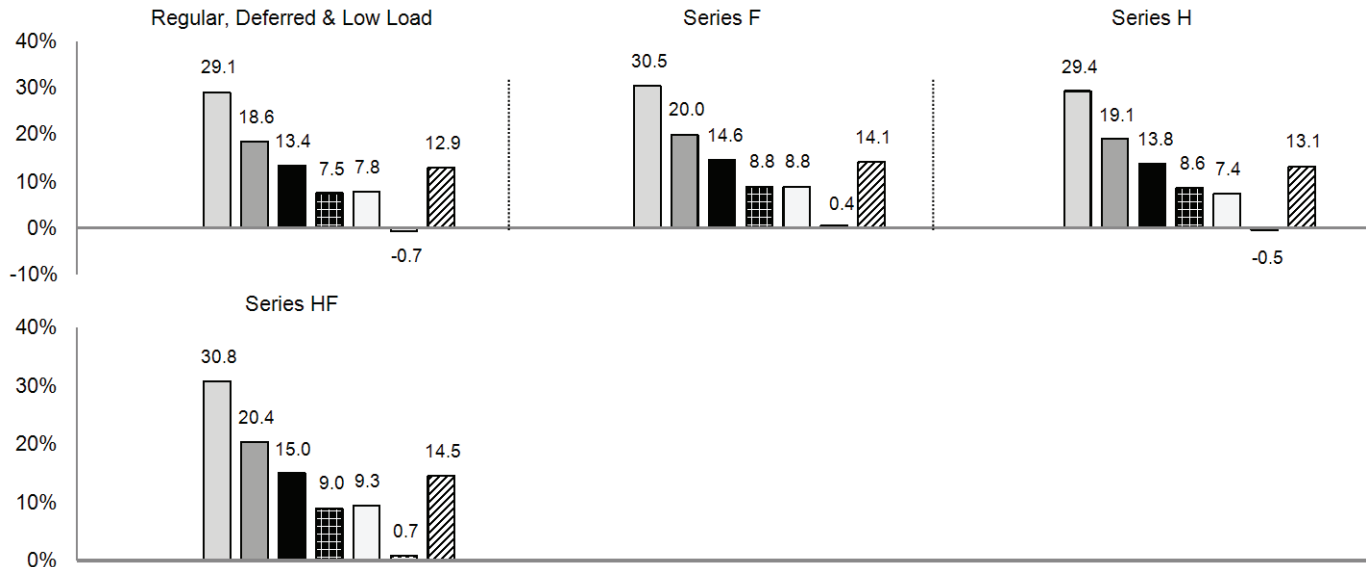
On October 18, 2019, Fiera Capital was appointed as the subadvisor of the Fund. The investment strategies were also changed on that date in order to reflect Fiera Capital's investment style and to provide Fiera Capital more flexibility in achieving the Fund's investment objectives, which remain unchanged.

These changes could have affected the performance of the Fund had they been in effect throughout the performance measurement periods presented.

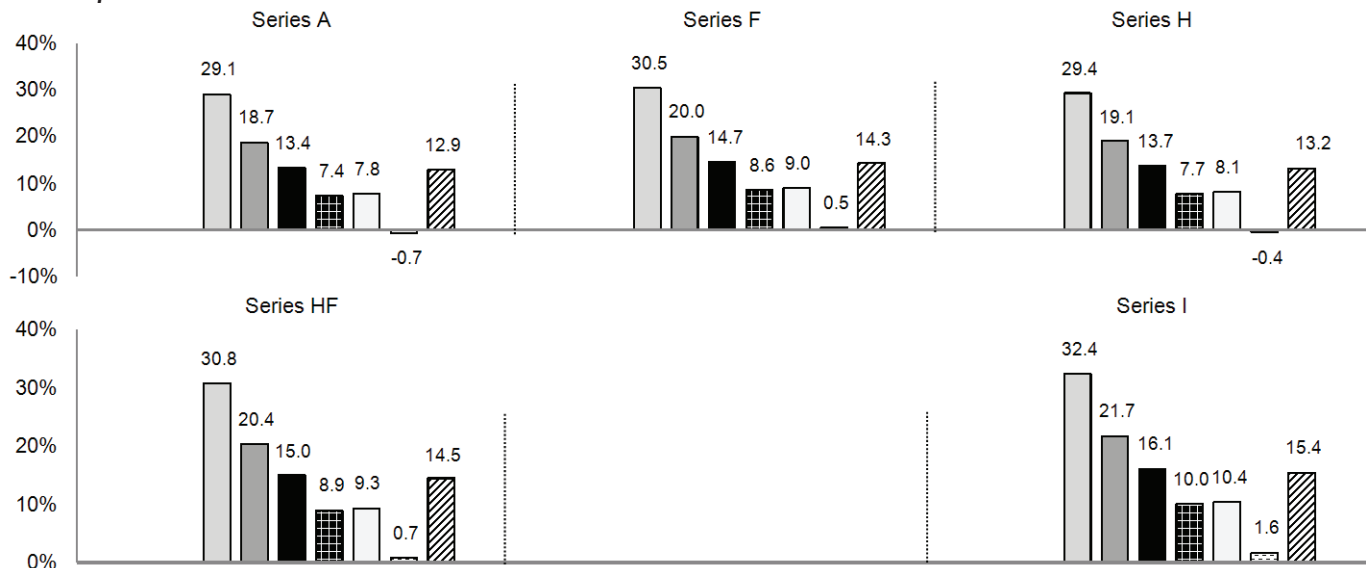
**Year-by-Year Returns**

The following charts illustrate the annual performance of each class and series of shares of the Fund since inception - January 2, 2013. *Performance of Series A reflects the past performance of the Regular Front End Load Series.* The charts show, in percentage terms, how much an investment made on the first day of each financial period would have increased or decreased by the last day of each financial period.

**Capital Gains**

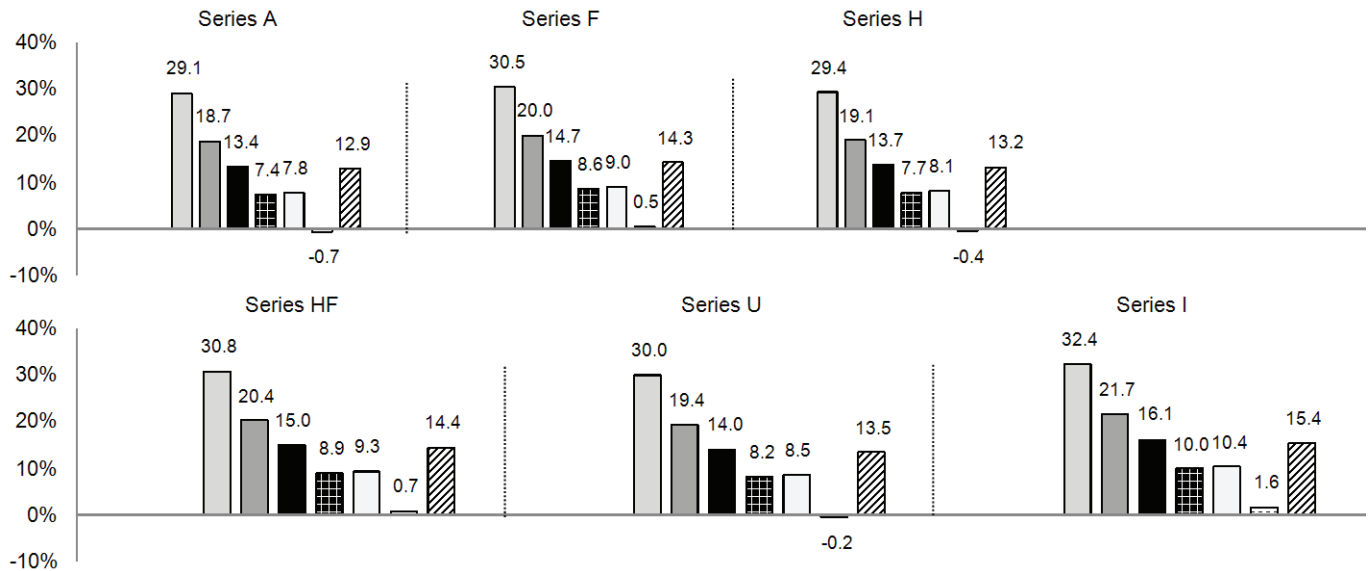


**Return of Capital**

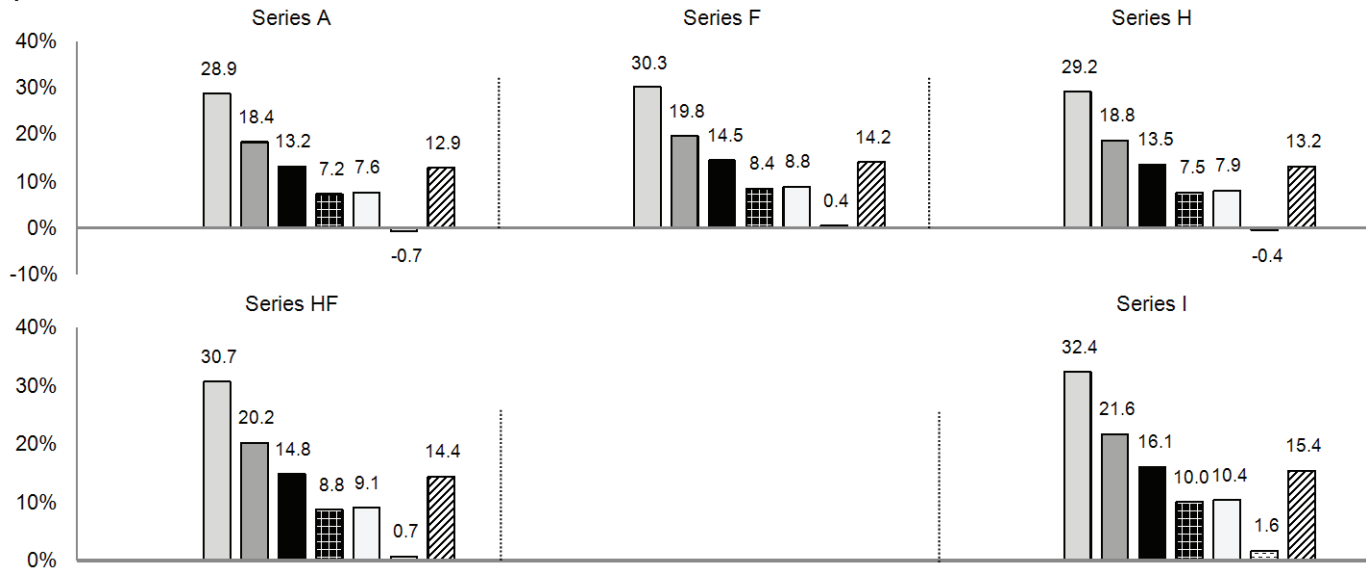


Dec 31 '13
  Dec 31 '14
  Dec 31 '15
  Dec 31 '16
  Dec 31 '17
  Dec 31 '18
  Dec 31 '19

**Dividend**



**Compound Growth**



Dec 31 '13    
  Dec 31 '14    
  Dec 31 '15    
  Dec 31 '16    
  Dec 31 '17    
  Dec 31 '18    
  Dec 31 '19

MANAGEMENT REPORT OF FUND PERFORMANCE  
**FIERA U.S. DIVIDEND CLASS**  
**(FORMERLY NATIXIS U.S. DIVIDEND PLUS CLASS)**

For the year ended December 31, 2019

**Annual Compound Returns**

The following table shows the annual compounded total return for each class and series currently offered by the Fund for each of the years shown, ending on December 31, 2019. The annual compound total return is also compared to the Benchmark on the same compound basis.

Series <sup>1</sup>	Capital Gains				Return of Capital			
	1 year	3 year	5 year	Since Inception <sup>4</sup>	1 year	3 year	5 year	Since Inception <sup>4</sup>
Series A Regular & Deferred Load	12.9%	6.5%	8.0%	12.3%	12.9%	6.5%	8.0%	12.3%
Series F	14.1%	7.6%	9.2%	13.6%	14.3%	7.8%	9.3%	13.6%
Series H	13.1%	6.5%	8.4%	12.7%	13.2%	6.8%	8.4%	12.6%
Series HF	14.5%	8.0%	9.6%	13.9%	14.5%	8.0%	9.5%	13.9%
Series I Low Load	12.9%	6.5%	8.0%	12.3%	15.4%	9.0%	10.6%	15.0%

Series <sup>1</sup>	Dividend				Compound Growth			
	1 year	3 year	5 year	Since Inception <sup>4</sup>	1 year	3 year	5 year	Since Inception <sup>4</sup>
Series A	12.9%	6.5%	8.0%	12.3%	12.9%	6.5%	7.9%	12.2%
Series F	14.3%	7.8%	9.3%	13.6%	14.2%	7.7%	9.2%	13.5%
Series H	13.2%	6.8%	8.3%	12.6%	13.2%	6.7%	8.2%	12.5%
Series HF	14.4%	8.0%	9.5%	13.9%	14.4%	7.9%	9.4%	13.8%
Series U	13.5%	7.1%	8.7%	13.0%				
Series I	15.4%	9.0%	10.6%	15.0%	15.4%	9.0%	10.6%	15.0%

	1 year	3 year	5 year	Since Inception <sup>4</sup>
Return of Benchmark <sup>2</sup>	25.2%	14.0%	14.2%	19.3%
Return of Benchmark <sup>3</sup>	20.5%	8.5%	10.8%	16.3%

<sup>1</sup> Net of all fees and expenses paid by the Fund other than Series I where performance is reported gross of fees negotiated and paid directly by the investor.

<sup>2</sup> S&P 500 Index.

<sup>3</sup> The Russell 1000 Value Total Return Index (C\$) measures the performance of the large-cap value segment of the U.S. equity universe.

<sup>4</sup> Annual compound returns since inception for all classes and series are from the Inception Date.

MANAGEMENT REPORT OF FUND PERFORMANCE  
**FIERA U.S. DIVIDEND CLASS**  
**(FORMERLY NATIXIS U.S. DIVIDEND PLUS CLASS)**

For the year ended December 31, 2019

**Financial Highlights\***

The following tables show selected key financial information about the Fund and are intended to help you understand the Fund's financial performance for each of the year or period ending dates indicated.

**Net Assets Per Share (\$) <sup>1</sup>**

CAPITAL GAINS	Regular, Deferred and Low Load Series					Series F				
	31-Dec-19	31-Dec-18	31-Dec-17	31-Dec-16	31-Dec-15	31-Dec-19	31-Dec-18	31-Dec-17	31-Dec-16	31-Dec-15
<b>Net assets, beginning of year</b>	12.47	12.56	12.81	12.77	12.93	12.79	12.74	12.96	12.92	13.07
Increase (decrease) from operations:										
Total revenue	0.39	0.37	0.38	0.38	0.41	0.44	0.37	0.38	0.39	0.42
Total expenses (excluding distributions)	(0.33)	(0.32)	(0.33)	(0.31)	(0.35)	(0.19)	(0.18)	(0.19)	(0.18)	(0.20)
Realized gains (losses) for the year	2.54	0.73	0.94	1.12	0.79	2.46	0.73	1.00	0.98	0.80
Unrealized gains (losses) for the year	(0.90)	(0.81)	(0.01)	(0.30)	0.94	(0.36)	(0.85)	0.14	(0.58)	0.79
<b>Total increase (decrease) from operations<sup>2</sup></b>	1.70	(0.03)	0.98	0.89	1.79	2.35	0.07	1.33	0.61	1.81
Distributions:										
From net investment income (excluding dividends)	-	-	-	-	-	-	-	-	-	-
From eligible dividends	-	-	-	-	-	-	-	-	-	-
From capital gains	(1.60)	-	(1.28)	(0.92)	(1.87)	(1.80)	-	(1.42)	(1.08)	(2.04)
Return of capital	-	-	-	-	-	-	-	-	-	-
<b>Total distributions<sup>3</sup></b>	(1.60)	-	(1.28)	(0.92)	(1.87)	(1.80)	-	(1.42)	(1.08)	(2.04)
<b>Net assets, end of year *</b>	12.49	12.47	12.56	12.81	12.77	12.81	12.79	12.74	12.96	12.92

	Series H					Series HF				
	31-Dec-19	31-Dec-18	31-Dec-17	31-Dec-16	31-Dec-15	31-Dec-19	31-Dec-18	31-Dec-17	31-Dec-16	31-Dec-15
<b>Net assets, beginning of year</b>	12.63	12.69	12.84	12.81	12.96	12.85	12.76	13.00	12.96	13.11
Increase (decrease) from operations:										
Total revenue	0.39	0.37	0.38	0.39	0.42	0.40	0.37	0.39	0.39	0.43
Total expenses (excluding distributions)	(0.31)	(0.30)	(0.28)	(0.27)	(0.30)	(0.15)	(0.14)	(0.15)	(0.14)	(0.16)
Realized gains (losses) for the year	2.88	0.73	0.98	1.11	0.81	2.64	0.74	1.00	1.14	0.79
Unrealized gains (losses) for the year	(1.24)	(0.86)	(0.03)	(0.06)	0.85	(1.03)	(0.86)	(0.03)	(0.73)	1.16
<b>Total increase (decrease) from operations<sup>2</sup></b>	1.72	(0.06)	1.05	1.17	1.78	1.86	0.11	1.21	0.66	2.22
Distributions:										
From net investment income (excluding dividends)	-	-	-	-	-	-	-	-	-	-
From eligible dividends	-	-	-	-	-	-	-	-	-	-
From capital gains	(1.65)	-	(1.24)	(0.97)	(1.92)	(1.85)	-	(1.50)	(1.12)	(2.10)
Return of capital	-	-	-	-	-	-	-	-	-	-
<b>Total distributions<sup>3</sup></b>	(1.65)	-	(1.24)	(0.97)	(1.92)	(1.85)	-	(1.50)	(1.12)	(2.10)
<b>Net assets, end of year *</b>	12.64	12.63	12.69	12.84	12.81	12.87	12.85	12.76	13.00	12.96

Please refer to the footnotes on the last page of this document.



MANAGEMENT REPORT OF FUND PERFORMANCE  
**FIERA U.S. DIVIDEND CLASS**  
**(FORMERLY NATIXIS U.S. DIVIDEND PLUS CLASS)**

For the year ended December 31, 2019

**Net Assets Per Share (\$) <sup>1</sup> (cont'd)**

RETURN OF CAPITAL	Series A					Series F				
	31-Dec-19	31-Dec-18	31-Dec-17	31-Dec-16	31-Dec-15	31-Dec-19	31-Dec-18	31-Dec-17	31-Dec-16	31-Dec-15
<b>Net assets, beginning of year</b>	15.14	16.18	15.82	15.45	14.24	16.37	17.22	16.60	16.01	14.57
Increase (decrease) from operations:										
Total revenue	0.44	0.47	0.44	0.44	0.44	0.47	0.49	0.53	0.51	0.49
Total expenses (excluding distributions)	(0.39)	(0.41)	(0.38)	(0.37)	(0.37)	(0.21)	(0.22)	(0.26)	(0.24)	(0.22)
Realized gains (losses) for the year	3.55	0.93	1.12	1.30	0.83	4.17	0.92	1.43	1.40	0.90
Unrealized gains (losses) for the year	(1.69)	(1.05)	(0.08)	(0.32)	0.88	(2.23)	(1.41)	(0.04)	(0.56)	0.91
<b>Total increase (decrease) from operations <sup>2</sup></b>	1.91	(0.06)	1.10	1.05	1.78	2.20	(0.22)	1.66	1.11	2.08
Distributions:										
From net investment income (excluding dividends)	-	-	-	-	-	-	-	-	-	-
From eligible dividends	-	-	-	-	-	-	-	-	-	-
From capital gains	-	-	-	-	-	-	-	-	-	-
Return of capital	(1.02)	(0.97)	(0.83)	(0.72)	(0.66)	(1.02)	(0.97)	(0.83)	(0.72)	(0.66)
<b>Total distributions <sup>3</sup></b>	(1.02)	(0.97)	(0.83)	(0.72)	(0.66)	(1.02)	(0.97)	(0.83)	(0.72)	(0.66)
<b>Net assets, end of year *</b>	16.03	15.14	16.18	15.82	15.45	17.65	16.37	17.22	16.60	16.01

	Series H					Series HF				
	31-Dec-19	31-Dec-18	31-Dec-17	31-Dec-16	31-Dec-15	31-Dec-19	31-Dec-18	31-Dec-17	31-Dec-16	31-Dec-15
<b>Net assets, beginning of year</b>	15.45	16.44	16.02	15.60	14.33	16.68	17.48	16.80	16.15	14.65
Increase (decrease) from operations:										
Total revenue	0.46	0.44	0.46	0.52	0.52	0.50	0.50	0.53	0.56	0.59
Total expenses (excluding distributions)	(0.35)	(0.34)	(0.35)	(0.38)	(0.38)	(0.19)	(0.19)	(0.21)	(0.21)	(0.22)
Realized gains (losses) for the year	3.45	0.81	1.14	1.56	0.97	3.86	0.96	1.38	1.82	1.12
Unrealized gains (losses) for the year	(1.50)	(1.16)	(0.10)	(0.54)	0.90	(1.75)	(1.12)	(0.11)	(0.58)	1.32
<b>Total increase (decrease) from operations <sup>2</sup></b>	2.06	(0.25)	1.15	1.16	2.01	2.42	0.15	1.59	1.59	2.81
Distributions:										
From net investment income (excluding dividends)	-	-	-	-	-	-	-	-	-	-
From eligible dividends	-	-	-	-	-	-	-	-	-	-
From capital gains	-	-	-	-	-	-	-	-	-	-
Return of capital	(1.02)	(0.97)	(0.83)	(0.72)	(0.66)	(1.02)	(0.97)	(0.83)	(0.72)	(0.66)
<b>Total distributions <sup>3</sup></b>	(1.02)	(0.97)	(0.83)	(0.72)	(0.66)	(1.02)	(0.97)	(0.83)	(0.72)	(0.66)
<b>Net assets, end of year *</b>	16.43	15.45	16.44	16.02	15.60	18.02	16.68	17.48	16.80	16.15

	Series I				
	31-Dec-19	31-Dec-18	31-Dec-17	31-Dec-16	31-Dec-15
<b>Net assets, beginning of year</b>	17.90	18.54	17.60	16.72	15.01
Increase (decrease) from operations:					
Total revenue	0.53	0.54	0.52	0.50	0.40
Total expenses (excluding distributions)	(0.06)	(0.03)	(0.03)	(0.02)	(0.02)
Realized gains (losses) for the year	4.66	1.04	1.33	1.48	1.00
Unrealized gains (losses) for the year	(2.55)	(1.24)	(0.06)	(0.37)	2.28
<b>Total increase (decrease) from operations <sup>2</sup></b>	2.58	0.31	1.76	1.59	3.66
Distributions:					
From net investment income (excluding dividends)	-	-	-	-	-
From eligible dividends	-	-	-	-	-
From capital gains	-	-	-	-	-
Return of capital	(1.02)	(0.97)	(0.83)	(0.72)	(0.66)
<b>Total distributions <sup>3</sup></b>	(1.02)	(0.97)	(0.83)	(0.72)	(0.66)
<b>Net assets, end of year *</b>	19.59	17.90	18.54	17.60	16.72

Please refer to the footnotes on the last page of this document.

MANAGEMENT REPORT OF FUND PERFORMANCE  
**FIERA U.S. DIVIDEND CLASS**  
**(FORMERLY NATIXIS U.S. DIVIDEND PLUS CLASS)**

For the year ended December 31, 2019

**Net Assets Per Share (\$) <sup>1</sup> (cont'd)**

DIVIDEND	Series A					Series F				
	31-Dec-19	31-Dec-18	31-Dec-17	31-Dec-16	31-Dec-15	31-Dec-19	31-Dec-18	31-Dec-17	31-Dec-16	31-Dec-15
<b>Net assets, beginning of year</b>	15.14	16.18	15.82	15.45	14.24	16.37	17.22	16.60	16.01	14.57
Increase (decrease) from operations:										
Total revenue	0.46	0.45	0.47	0.46	0.46	0.45	0.50	0.45	0.46	0.47
Total expenses (excluding distributions)	(0.39)	(0.40)	(0.41)	(0.38)	(0.38)	(0.22)	(0.22)	(0.22)	(0.21)	(0.21)
Realized gains (losses) for the year	3.22	0.91	1.21	1.35	0.87	4.05	0.93	1.20	1.26	0.86
Unrealized gains (losses) for the year	(1.36)	(0.93)	(0.08)	(0.33)	0.91	(2.29)	(1.36)	(0.04)	(0.51)	0.87
<b>Total increase (decrease) from operations <sup>2</sup></b>	1.93	0.03	1.19	1.10	1.86	1.99	(0.15)	1.39	1.00	1.99
Distributions:										
From net investment income (excluding dividends)	-	-	-	-	-	-	-	-	-	-
From eligible dividends	(1.02)	(0.97)	(0.83)	(0.72)	(0.66)	(1.02)	(0.97)	(0.83)	(0.72)	(0.66)
From capital gains	-	-	-	-	-	-	-	-	-	-
Return of capital	-	-	-	-	-	-	-	-	-	-
<b>Total distributions <sup>3</sup></b>	(1.02)	(0.97)	(0.83)	(0.72)	(0.66)	(1.02)	(0.97)	(0.83)	(0.72)	(0.66)
<b>Net assets, end of year *</b>	16.03	15.14	16.18	15.82	15.45	17.65	16.37	17.22	16.60	16.01

	Series H					Series HF				
	31-Dec-19	31-Dec-18	31-Dec-17	31-Dec-16	31-Dec-15	31-Dec-19	31-Dec-18	31-Dec-17	31-Dec-16	31-Dec-15
<b>Net assets, beginning of year</b>	15.44	16.44	16.02	15.60	14.33	16.67	17.48	16.80	16.15	14.65
Increase (decrease) from operations:										
Total revenue	0.46	0.51	0.49	0.41	0.41	0.50	0.50	0.46	0.45	0.44
Total expenses (excluding distributions)	(0.36)	(0.39)	(0.37)	(0.30)	(0.30)	(0.20)	(0.19)	(0.18)	(0.17)	(0.17)
Realized gains (losses) for the year	3.44	0.92	1.22	1.24	0.77	3.85	0.98	1.21	1.48	0.85
Unrealized gains (losses) for the year	(1.49)	(1.56)	(0.11)	(0.42)	0.72	(1.76)	(1.20)	(0.10)	(0.47)	1.00
<b>Total increase (decrease) from operations <sup>2</sup></b>	2.05	(0.52)	1.23	0.93	1.60	2.39	0.09	1.39	1.29	2.12
Distributions:										
From net investment income (excluding dividends)	-	-	-	-	-	-	-	-	-	-
From eligible dividends	(1.02)	(0.97)	(0.83)	(0.72)	(0.66)	(1.02)	(0.97)	(0.83)	(0.72)	(0.66)
From capital gains	-	-	-	-	-	-	-	-	-	-
Return of capital	-	-	-	-	-	-	-	-	-	-
<b>Total distributions <sup>3</sup></b>	(1.02)	(0.97)	(0.83)	(0.72)	(0.66)	(1.02)	(0.97)	(0.83)	(0.72)	(0.66)
<b>Net assets, end of year *</b>	16.42	15.44	16.44	16.02	15.60	18.02	16.67	17.48	16.80	16.15

	Series U					Series I				
	31-Dec-19	31-Dec-18	31-Dec-17	31-Dec-16	31-Dec-15	31-Dec-19	31-Dec-18	31-Dec-17	31-Dec-16	31-Dec-15
<b>Net assets, beginning of year</b>	15.82	16.78	16.27	15.76	14.44	17.91	18.54	17.60	16.72	15.01
Increase (decrease) from operations:										
Total revenue	0.47	0.49	0.43	0.40	0.46	0.41	0.54	0.52	1.07	0.33
Total expenses (excluding distributions)	(0.33)	(0.34)	(0.27)	(0.24)	(0.29)	(0.06)	(0.03)	(0.03)	(0.05)	(0.02)
Realized gains (losses) for the year	3.60	1.06	1.03	1.16	0.84	5.48	1.06	1.35	3.18	0.82
Unrealized gains (losses) for the year	(1.60)	(1.08)	(0.46)	(0.33)	0.90	(4.42)	(1.27)	(0.06)	(0.77)	1.88
<b>Total increase (decrease) from operations <sup>2</sup></b>	2.14	0.13	0.73	0.99	1.91	1.41	0.30	1.78	3.43	3.01
Distributions:										
From net investment income (excluding dividends)	-	-	-	-	-	-	-	-	-	-
From eligible dividends	(1.02)	(0.97)	(0.83)	(0.72)	(0.66)	(1.02)	(0.97)	(0.83)	(0.72)	(0.66)
From capital gains	-	-	-	-	-	-	-	-	-	-
Return of capital	-	-	-	-	-	-	-	-	-	-
<b>Total distributions <sup>3</sup></b>	(1.02)	(0.97)	(0.83)	(0.72)	(0.66)	(1.02)	(0.97)	(0.83)	(0.72)	(0.66)
<b>Net assets, end of year *</b>	16.88	15.82	16.78	16.27	15.76	19.59	17.91	18.54	17.60	16.72

Please refer to the footnotes on the last page of this document.

MANAGEMENT REPORT OF FUND PERFORMANCE  
**FIERA U.S. DIVIDEND CLASS**  
**(FORMERLY NATIXIS U.S. DIVIDEND PLUS CLASS)**

For the year ended December 31, 2019

**Net Assets Per Share (\$) <sup>1</sup> (cont'd)**

COMPOUND GROWTH	Series A					Series F				
	31-Dec-19	31-Dec-18	31-Dec-17	31-Dec-16	31-Dec-15	31-Dec-19	31-Dec-18	31-Dec-17	31-Dec-16	31-Dec-15
<b>Net assets, beginning of year</b>	19.80	19.94	18.53	17.27	15.26	21.19	21.09	19.38	17.87	15.61
Increase (decrease) from operations:										
Total revenue	0.60	0.58	0.55	0.52	0.50	0.64	0.62	0.58	0.54	0.51
Total expenses (excluding distributions)	(0.53)	(0.51)	(0.51)	(0.46)	(0.44)	(0.31)	(0.29)	(0.31)	(0.28)	(0.26)
Realized gains (losses) for the year	4.63	1.17	1.36	1.49	0.92	5.22	1.20	1.51	1.55	0.96
Unrealized gains (losses) for the year	(2.09)	(1.24)	(0.15)	(0.63)	1.00	(2.65)	(1.46)	-	(0.46)	0.97
<b>Total increase (decrease) from operations <sup>2</sup></b>	2.61	-	1.25	0.92	1.98	2.90	0.07	1.78	1.35	2.18
Distributions:										
From net investment income (excluding dividends)	-	-	-	-	-	-	-	-	-	-
From eligible dividends	-	-	-	-	-	-	-	-	-	-
From capital gains	-	-	-	-	-	-	-	-	-	-
Return of capital	-	-	-	-	-	-	-	-	-	-
<b>Total distributions <sup>3</sup></b>	-	-	-	-	-	-	-	-	-	-
<b>Net assets, end of year *</b>	22.35	19.80	19.94	18.53	17.27	24.19	21.19	21.09	19.38	17.87

	Series H					Series HF				
	31-Dec-19	31-Dec-18	31-Dec-17	31-Dec-16	31-Dec-15	31-Dec-19	31-Dec-18	31-Dec-17	31-Dec-16	31-Dec-15
<b>Net assets, beginning of year</b>	20.13	20.21	18.74	17.43	15.35	21.55	21.39	19.62	18.03	15.71
Increase (decrease) from operations:										
Total revenue	0.61	0.59	0.56	0.53	0.49	0.66	0.63	0.58	0.55	0.52
Total expenses (excluding distributions)	(0.48)	(0.46)	(0.47)	(0.42)	(0.39)	(0.26)	(0.24)	(0.26)	(0.23)	(0.21)
Realized gains (losses) for the year	4.77	1.15	1.41	1.52	0.93	5.18	1.22	1.52	1.58	0.97
Unrealized gains (losses) for the year	(2.18)	(1.49)	(0.05)	(0.38)	1.03	(2.44)	(1.43)	(0.07)	(0.32)	0.99
<b>Total increase (decrease) from operations <sup>2</sup></b>	2.72	(0.21)	1.45	1.25	2.06	3.14	0.18	1.77	1.58	2.27
Distributions:										
From net investment income (excluding dividends)	-	-	-	-	-	-	-	-	-	-
From eligible dividends	-	-	-	-	-	-	-	-	-	-
From capital gains	-	-	-	-	-	-	-	-	-	-
Return of capital	-	-	-	-	-	-	-	-	-	-
<b>Total distributions <sup>3</sup></b>	-	-	-	-	-	-	-	-	-	-
<b>Net assets, end of year *</b>	22.78	20.13	20.21	18.74	17.43	24.66	21.55	21.39	19.62	18.03

	Series I				
	31-Dec-19	31-Dec-18	31-Dec-17	31-Dec-16	31-Dec-15
<b>Net assets, beginning of year</b>	23.07	22.70	20.57	18.70	16.11
Increase (decrease) from operations:					
Total revenue	0.70	0.67	0.62	0.57	0.51
Total expenses (excluding distributions)	(0.07)	(0.04)	(0.03)	(0.03)	(0.03)
Realized gains (losses) for the year	5.71	1.23	1.66	1.99	1.11
Unrealized gains (losses) for the year	(2.87)	(2.01)	(0.22)	(0.27)	0.53
<b>Total increase (decrease) from operations <sup>2</sup></b>	3.47	(0.15)	2.03	2.26	2.12
Distributions:					
From net investment income (excluding dividends)	-	-	-	-	-
From eligible dividends	-	-	-	-	-
From capital gains	-	-	-	-	-
Return of capital	-	-	-	-	-
<b>Total distributions <sup>3</sup></b>	-	-	-	-	-
<b>Net assets, end of year *</b>	26.63	23.07	22.70	20.57	18.70

Please refer to the footnotes on the last page of this document.

MANAGEMENT REPORT OF FUND PERFORMANCE  
**FIERA U.S. DIVIDEND CLASS**  
**(FORMERLY NATIXIS U.S. DIVIDEND PLUS CLASS)**

For the year ended December 31, 2019

**Ratios and Supplemental Data <sup>1</sup>**

CAPITAL GAINS	Regular, Deferred and Low Load Series					Series F				
	31-Dec-19	31-Dec-18	31-Dec-17	31-Dec-16	31-Dec-15	31-Dec-19	31-Dec-18	31-Dec-17	31-Dec-16	31-Dec-15
Total net asset value (\$)	1,102,277	1,523,824	1,749,098	2,024,900	2,075,317	87,801	188,696	194,204	304,628	644,349
Number of shares outstanding	88,279	122,163	139,285	158,107	162,471	6,855	14,749	15,244	23,503	49,871
Management expense ratio (%) <sup>2</sup>	2.43	2.47	2.53	2.50	2.51	1.31	1.35	1.43	1.43	1.42
Management expense ratio before waivers or absorptions (%) <sup>2</sup>	2.49	2.51	2.54	2.51	2.51	1.38	1.40	1.44	1.43	1.43
Trading expense ratio (%) <sup>3</sup>	0.07	0.04	0.04	0.09	0.10	0.07	0.04	0.04	0.09	0.10
Portfolio turnover rate (%) <sup>4</sup>	168.30	34.55	32.13	52.82	53.16	168.30	34.55	32.13	52.82	53.16
Net asset value per share (\$)	12.49	12.47	12.56	12.81	12.77	12.81	12.79	12.74	12.96	12.92
	Series H					Series HF				
	31-Dec-19	31-Dec-18	31-Dec-17	31-Dec-16	31-Dec-15	31-Dec-19	31-Dec-18	31-Dec-17	31-Dec-16	31-Dec-15
Total net asset value (\$)	21,282	21,530	21,632	19,998	401,194	1,079,729	1,296,240	1,315,559	1,219,778	494,852
Number of shares outstanding	1,684	1,705	1,705	1,557	31,324	83,926	100,870	103,130	93,818	38,188
Management expense ratio (%) <sup>2</sup>	2.20	2.25	2.16	2.16	2.19	1.00	1.04	1.11	1.09	1.12
Management expense ratio before waivers or absorptions (%) <sup>2</sup>	2.27	2.30	2.17	2.16	2.19	1.07	1.09	1.12	1.09	1.12
Trading expense ratio (%) <sup>3</sup>	0.07	0.04	0.04	0.09	0.10	0.07	0.04	0.04	0.09	0.10
Portfolio turnover rate (%) <sup>4</sup>	168.30	34.55	32.13	52.82	53.16	168.30	34.55	32.13	52.82	53.16
Net asset value per share (\$)	12.64	12.63	12.69	12.84	12.81	12.87	12.85	12.76	13.00	12.96
RETURN OF CAPITAL	Series A					Series F				
	31-Dec-19	31-Dec-18	31-Dec-17	31-Dec-16	31-Dec-15	31-Dec-19	31-Dec-18	31-Dec-17	31-Dec-16	31-Dec-15
Total net asset value (\$)	5,926,397	5,115,794	5,521,779	5,321,394	5,038,952	3,993,775	2,599,053	1,884,413	1,320,358	925,311
Number of shares outstanding	369,696	337,997	341,332	336,457	326,104	226,257	158,745	109,437	79,540	57,809
Management expense ratio (%) <sup>2</sup>	2.42	2.46	2.53	2.52	2.52	1.15	1.26	1.41	1.41	1.39
Management expense ratio before waivers or absorptions (%) <sup>2</sup>	2.49	2.50	2.54	2.53	2.52	1.21	1.31	1.42	1.42	1.40
Trading expense ratio (%) <sup>3</sup>	0.07	0.04	0.04	0.09	0.10	0.07	0.04	0.04	0.09	0.10
Portfolio turnover rate (%) <sup>4</sup>	168.30	34.55	32.13	52.82	53.16	168.30	34.55	32.13	52.82	53.16
Net asset value per share (\$)	16.03	15.14	16.18	15.82	15.45	17.65	16.37	17.22	16.60	16.01
	Series H					Series HF				
	31-Dec-19	31-Dec-18	31-Dec-17	31-Dec-16	31-Dec-15	31-Dec-19	31-Dec-18	31-Dec-17	31-Dec-16	31-Dec-15
Total net asset value (\$)	1,374,169	1,465,299	1,118,474	1,119,123	729,229	2,254,737	2,188,121	2,023,082	1,798,873	729,437
Number of shares outstanding	83,652	94,869	68,021	69,869	46,759	125,111	131,220	115,707	107,086	45,176
Management expense ratio (%) <sup>2</sup>	2.14	2.19	2.25	2.23	2.21	1.01	1.06	1.14	1.14	1.12
Management expense ratio before waivers or absorptions (%) <sup>2</sup>	2.20	2.24	2.26	2.24	2.21	1.07	1.11	1.15	1.14	1.12
Trading expense ratio (%) <sup>3</sup>	0.07	0.04	0.04	0.09	0.10	0.07	0.04	0.04	0.09	0.10
Portfolio turnover rate (%) <sup>4</sup>	168.30	34.55	32.13	52.82	53.16	168.30	34.55	32.13	52.82	53.16
Net asset value per share (\$)	16.43	15.45	16.44	16.02	15.60	18.02	16.68	17.48	16.80	16.15
	Series I									
	31-Dec-19	31-Dec-18	31-Dec-17	31-Dec-16	31-Dec-15					
Total net asset value (\$)	2,464,776	1,191,056	1,206,869	1,164,761	1,111,918					
Number of shares outstanding	125,827	66,540	65,083	66,175	66,499					
Management expense ratio (%) <sup>2</sup>	0.17	0.17	0.17	0.15	0.16					
Management expense ratio before waivers or absorptions (%) <sup>2</sup>	0.23	0.21	0.18	0.16	0.16					
Trading expense ratio (%) <sup>3</sup>	0.07	0.04	0.04	0.09	0.10					
Portfolio turnover rate (%) <sup>4</sup>	168.30	34.55	32.13	52.82	53.16					
Net asset value per share (\$)	19.59	17.90	18.54	17.60	16.72					

Please refer to the footnotes on the last page of this document.

MANAGEMENT REPORT OF FUND PERFORMANCE  
**FIERA U.S. DIVIDEND CLASS**  
**(FORMERLY NATIXIS U.S. DIVIDEND PLUS CLASS)**

For the year ended December 31, 2019

**Ratios and Supplemental Data** <sup>1</sup> (cont'd)

DIVIDEND	Series A					Series F				
	31-Dec-19	31-Dec-18	31-Dec-17	31-Dec-16	31-Dec-15	31-Dec-19	31-Dec-18	31-Dec-17	31-Dec-16	31-Dec-15
Total net asset value (\$)	6,054,144	6,108,523	6,999,760	8,025,311	8,222,158	6,274,079	2,419,307	1,916,575	1,797,467	3,418,325
Number of shares outstanding	377,622	403,585	432,694	507,417	532,111	355,474	147,769	111,304	108,281	213,562
Management expense ratio (%) <sup>2</sup>	2.41	2.46	2.53	2.52	2.52	1.15	1.26	1.41	1.41	1.39
Management expense ratio before waivers or absorptions (%) <sup>2</sup>	2.48	2.50	2.54	2.53	2.52	1.22	1.31	1.42	1.42	1.40
Trading expense ratio (%) <sup>3</sup>	0.07	0.04	0.04	0.09	0.10	0.07	0.04	0.04	0.09	0.10
Portfolio turnover rate (%) <sup>4</sup>	168.30	34.55	32.13	52.82	53.16	168.30	34.55	32.13	52.82	53.16
Net asset value per share (\$)	16.03	15.14	16.18	15.82	15.45	17.65	16.37	17.22	16.60	16.01
	Series H					Series HF				
	31-Dec-19	31-Dec-18	31-Dec-17	31-Dec-16	31-Dec-15	31-Dec-19	31-Dec-18	31-Dec-17	31-Dec-16	31-Dec-15
Total net asset value (\$)	1,167,060	1,258,700	904,868	901,440	1,095,050	3,741,950	3,722,040	3,038,158	3,039,112	3,275,157
Number of shares outstanding	71,080	81,500	55,031	56,278	70,215	207,710	223,219	173,761	180,916	202,842
Management expense ratio (%) <sup>2</sup>	2.18	2.19	2.25	2.23	2.21	1.04	1.06	1.14	1.14	1.12
Management expense ratio before waivers or absorptions (%) <sup>2</sup>	2.25	2.24	2.26	2.24	2.21	1.11	1.11	1.15	1.14	1.12
Trading expense ratio (%) <sup>3</sup>	0.07	0.04	0.04	0.09	0.10	0.07	0.04	0.04	0.09	0.10
Portfolio turnover rate (%) <sup>4</sup>	168.30	34.55	32.13	52.82	53.16	168.30	34.55	32.13	52.82	53.16
Net asset value per share (\$)	16.42	15.44	16.44	16.02	15.60	18.02	16.67	17.48	16.80	16.15
	Series U					Series I				
	31-Dec-19	31-Dec-18	31-Dec-17	31-Dec-16	31-Dec-15	31-Dec-19	31-Dec-18	31-Dec-17	31-Dec-16	31-Dec-15
Total net asset value (\$)	471,519	489,748	717,906	1,604,515	1,816,105	55,284	3,046	2,997	2,716	2,469
Number of shares outstanding	27,927	30,966	42,790	98,641	115,206	2,822	170	162	155	148
Management expense ratio (%) <sup>2</sup>	1.91	1.94	2.03	1.83	1.95	0.17	0.17	0.17	0.15	0.16
Management expense ratio before waivers or absorptions (%) <sup>2</sup>	1.98	1.98	2.04	1.84	1.96	0.24	0.21	0.18	0.16	0.16
Trading expense ratio (%) <sup>3</sup>	0.07	0.04	0.04	0.09	0.10	0.07	0.04	0.04	0.09	0.10
Portfolio turnover rate (%) <sup>4</sup>	168.30	34.55	32.13	52.82	53.16	168.30	34.55	32.13	52.82	53.16
Net asset value per share (\$)	16.88	15.82	16.78	16.27	15.76	19.59	17.91	18.54	17.60	16.72

COMPOUND GROWTH	Series A					Series F				
	31-Dec-19	31-Dec-18	31-Dec-17	31-Dec-16	31-Dec-15	31-Dec-19	31-Dec-18	31-Dec-17	31-Dec-16	31-Dec-15
Total net asset value (\$)	13,184,341	14,355,627	17,600,866	21,943,085	26,452,385	18,913,882	13,197,263	12,454,838	9,115,856	11,282,181
Number of shares outstanding	589,846	725,057	882,881	1,184,509	1,531,389	781,836	622,890	590,499	470,331	631,333
Management expense ratio (%) <sup>2</sup>	2.42	2.48	2.70	2.69	2.68	1.26	1.33	1.58	1.57	1.55
Management expense ratio before waivers or absorptions (%) <sup>2</sup>	2.49	2.52	2.71	2.70	2.68	1.33	1.38	1.59	1.57	1.56
Trading expense ratio (%) <sup>3</sup>	0.07	0.04	0.04	0.09	0.10	0.07	0.04	0.04	0.09	0.10
Portfolio turnover rate (%) <sup>4</sup>	168.30	34.55	32.13	52.82	53.16	168.30	34.55	32.13	52.82	53.16
Net asset value per share (\$)	22.35	19.80	19.94	18.53	17.27	24.19	21.19	21.09	19.38	17.87
	Series H					Series HF				
	31-Dec-19	31-Dec-18	31-Dec-17	31-Dec-16	31-Dec-15	31-Dec-19	31-Dec-18	31-Dec-17	31-Dec-16	31-Dec-15
Total net asset value (\$)	4,660,677	4,573,932	4,589,560	5,156,717	5,509,573	18,340,558	17,181,058	17,276,835	16,105,326	16,761,561
Number of shares outstanding	204,612	227,262	227,038	275,218	316,161	743,638	797,087	807,520	821,066	929,441
Management expense ratio (%) <sup>2</sup>	2.17	2.22	2.44	2.44	2.39	1.04	1.09	1.30	1.28	1.26
Management expense ratio before waivers or absorptions (%) <sup>2</sup>	2.24	2.26	2.45	2.44	2.39	1.11	1.13	1.31	1.29	1.27
Trading expense ratio (%) <sup>3</sup>	0.07	0.04	0.04	0.09	0.10	0.07	0.04	0.04	0.09	0.10
Portfolio turnover rate (%) <sup>4</sup>	168.30	34.55	32.13	52.82	53.16	168.30	34.55	32.13	52.82	53.16
Net asset value per share (\$)	22.78	20.13	20.21	18.74	17.43	24.66	21.55	21.39	19.62	18.03
	Series I									
	31-Dec-19	31-Dec-18	31-Dec-17	31-Dec-16	31-Dec-15					
Total net asset value (\$)	3,575,589	2,936,914	1,769,648	1,014,547	1,182,010					
Number of shares outstanding	134,293	127,287	77,946	49,324	63,217					
Management expense ratio (%) <sup>2</sup>	0.17	0.16	0.16	0.15	0.17					
Management expense ratio before waivers or absorptions (%) <sup>2</sup>	0.23	0.21	0.17	0.15	0.18					
Trading expense ratio (%) <sup>3</sup>	0.07	0.04	0.04	0.09	0.10					
Portfolio turnover rate (%) <sup>4</sup>	168.30	34.55	32.13	52.82	53.16					
Net asset value per share (\$)	26.63	23.07	22.70	20.57	18.70					

Please refer to the footnotes on the last page of this document.

## Financial Highlights

\* Financial highlight information is derived from financial statements prepared in compliance with International Financial Reporting Standards ("IFRS"). All other calculations for the purposes of this MRFP are made using Net Asset Value. As at December 31, 2019 there was no significant difference between "Net Assets" and "Net Asset Value" under IFRS.

### Net Assets Per Share footnotes

- <sup>1</sup> This information is derived from the Fund's audited annual financial statements as at December 31 of the years shown.
  - <sup>2</sup> Net assets and distributions are based on the actual amount of shares at the relevant time. The increase (decrease) from operations is based on the weighted average number of shares outstanding over the financial period.
  - <sup>3</sup> Distributions were reinvested in additional shares of the Fund, unless the investor requested payment in cash.
- \* This is not a reconciliation of the beginning and ending net assets per share as the increase (decrease) from operations data is based on the weighted average number of shares during the period rather than actual share amounts at the relevant time.

### Ratios and Supplemental Data footnotes

- <sup>1</sup> The information is provided as at December 31 of the years shown.
- <sup>2</sup> The management expense ratio (MER) is calculated in accordance with National Instrument 81-106 and is based on total expenses (excluding distributions, commissions, portfolio transaction costs and forward fees as applicable) for the stated period and is expressed as an annualized percentage of daily average net asset value during the period. In a period where a series is established, the management fee ratio is annualized from the date of inception to the end of the period.  
  
The Manager may authorize a reduction in the management fees and/or operating expense rates generally for certain investors of the Fund who pay or incur distribution or other expenses normally paid by the Fund or the Manager. In this case, if the Manager reduces or rebates a portion of the management fee, the Fund or the Manager pays an amount equal to the reduction either as a distribution or as a direct rebate. The MER does not take this type of reduction into account.  
  
The Manager may temporarily reduce or absorb all or any portion of the management fee and/or operating expenses of the Fund and can terminate the reduction or absorption at any time. The Manager expects to continue to absorb these fees or expenses until such time as the Fund is of sufficient size to reasonably absorb all fees and expenses.
- <sup>3</sup> The trading expense ratio represents total commissions and other portfolio transaction costs expressed as an annualized percentage of daily average Transactional NAV during the period.
- <sup>4</sup> The Fund's portfolio turnover rate indicates how the Fund's portfolio advisor manages its portfolio investments. A portfolio turnover rate of 100% is equivalent to the Fund buying and selling all of the securities in its portfolio once in the course of the period. The higher the Fund's portfolio turnover rate in the period, the greater the trading costs payable by the Fund and the greater the chance of an investor receiving taxable capital gains in the period. There is not necessarily a relationship between a high turnover rate and the performance of a fund.